



Kilmore Primary School

35 Lancefield Road, Kilmore 3764 • PO Box 105, Kilmore 3764 • ABN 85 985 746 253  
P 03 5782 1268 E kilmore.ps@education.vic.gov.au W www.kilmoreps.vic.edu.au

NEWSLETTER

Friday, 12th December 2025

# THANK YOU Deb Barton



**FAREWELL AFTER AN  
AMAZING 35 YEARS  
SERVICE AT  
KILMORE PRIMARY  
SCHOOL**



When I first came to Kilmore Primary School it had 168 children. I have had the privilege and pleasure of watching it grow and thrive for the past 35 years.

As an Education Support worker, I feel very lucky that I have spent my career in a job that I love so much. Coming to KPS every day has been a pleasure.

I knew when I came here I couldn't change the world but I could contribute. I have had the privilege of assisting countless students, helping them find their potential and watching them grow into their best selves. The smiles, the tears, the "aha" moments and the challenges that have been overcome, have filled my time here with purpose and immense satisfaction.

One highlight for me has been school camps, watching students have the best time.

I would like to shout out all the wonderful staff at KPS that have been part of my amazing journey. I have been blessed to work along side some of the most dedicated and passionate teachers and education support staff. I will cherish the memories we have made, the camaraderie here is truly special and I am grateful for all the friendships I have made.

As the saying goes, 'it takes a village to raise a child' and I feel very lucky to have been part of the KPS Village for so long.

KPS will always hold a special place in my heart.

To my ES cohort, thank you for your team work, patience and your friendships.

I will truly miss our daily interactions.

To the students, you are the reason we are all here, to watch you grow, learn and achieve your potential has been by far my greatest reward.

To the teachers and leadership of Kilmore Primary School, thank you for your endless support always. Your passion for education has been a constant source of inspiration, your dedication is beyond words.

As I retire from education, I will carry with me so many memories and stories, too many to put on paper.

Kilmore Primary School has not only been a workplace, but a second home where I have grown personally and professionally .

Good luck to this wonderful community for the future — Deb Barton.



**BREAKFAST CLUB — Mon, Tues, Wed, Thurs and Friday**

**December**

**Tuesday 16th**

Christmas Concert

**Wednesday 17th**

Grade 6 Funfields Excursion

**Friday 19th**

**Last day of Term 4 — 1.30pm finish**

**2026**

**Thursday 29th**

**First day of Term 1—students return to school**

# HAPPY BIRTHDAY

Birthday wishes to the following students who will be celebrating their birthday over the coming week:



Hunter M, Lanah L, Madeline K, Te Waiora T, Isla S, Karissa S and Ava W.

### Facebook

As Facebook is not always monitored by staff, please direct any questions/queries/concerns to the school directly via [kilmore.ps@education.vic.gov.au](mailto:kilmore.ps@education.vic.gov.au) or by calling the office on 5782 1268.



### REMINDER TO WEAR YOUR HAT

All students and staff are required to wear hats that protect their face, neck and ears, i.e. legionnaire, broad brimmed or bucket hats, whenever they are outside. Baseball or peak caps are not considered a suitable alternative.

Please note the school does not sell hats. You can purchase your hat from All Things Uniform, Broadford.



## 2025 School Term Dates

Term 4: 6th October to 19th December

## 2026 School Term Dates

Term 1: 29th January to 2nd April

Term 2: 20th April to 26th June

Term 3: 13th July to 18th September

Term 4: 5th October to 18th December

### Late Arrivals

If your child arrives after 8.50am please ensure they go to the office to **be signed in**.

If they are not signed in you will receive an SMS stating that your child is away.



### Drink Bottles

Reminder all students need to bring a drink bottle to school.



### SICK BAY LINEN ROSTER

*THANK YOU TO OUR WONDERFUL VOLUNTEERS FOR YOUR ASSISTANCE DURING THE YEAR, YOU ARE AMAZING.*



### 2026 Book List/Stationery Packs—Please check your emails

Families have been emailed a link via Compass for ordering 2026 Book Lists. Please remember to order for your child's 2026 class. The email includes our future Foundation students for 2026.

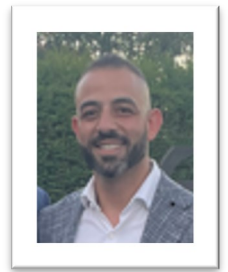
You can also view the booklist/stationery packs on our Kilmore Primary School website: <https://www.kilmoreps.vic.gov.au>

Go to Parents tab—2026 Stationery Packs and select the year level for 2026.

Book Lists for Next Year



FROM  
*Mr Nicolaides*



Dear Kilmore Primary School Community,

 **Kilmore Primary School Christmas Carols – Tuesday 16 December**

We are very excited to invite all families to our **2025 Christmas Carols Evening**, taking place **next Tuesday, 16 December**. This event is one of the highlights of our year, and we look forward to celebrating together as a school community.

 **Event Schedule**

**4:00pm** – Food vendors open located on the school OVAL

Families are welcome to arrive early, enjoy dinner, and settle into the festive atmosphere.

**5:00pm** – Students meet classroom teachers in their rooms.

All students are to go directly to their 2025 classrooms at 5:00pm.

Teachers will walk their classes across to the oval and students will be seated with their grade level in the designated performance area.

**5:30pm – 7:30pm** – Christmas Carols

Our students have been busy practising their Christmas songs in Performing Arts and are excited to share them with you.

**After 7:30pm** – Student collection

At the conclusion of the event, all students must return to their classrooms with their teachers.

Parents will then collect their children **from their designated classrooms**, not from the oval.

This ensures student safety and allows us to account for every child.

 **Christmas Raffle**

Our **Biggest Christmas Raffle Yet!** will be drawn during the Carols.

Tickets will be available for purchase on the night.

We sincerely thank our generous families and local businesses for contributing prizes.

 **Seating Map**

Please refer to the seating map below family picnic areas, class performance zones

**SEATING MAP**

- Family seating positioned behind class grades.
- Class groups seated in the centre section in front of the stage
- Stage/performance front area clearly marked

 **Important Reminders**

- Students must stay with their class for the duration of the Carols.
- Families are encouraged to bring picnic blankets or low chairs.
- Students are to bring a cushion to sit on to ensure they are comfortable during the evening.
- Food vendors will be available from 4:00pm—no need to cook! But you are welcome to bring a picnic blanket and food and get in early to reserve your spot.
- Please keep walkways clear so classes can move safely.

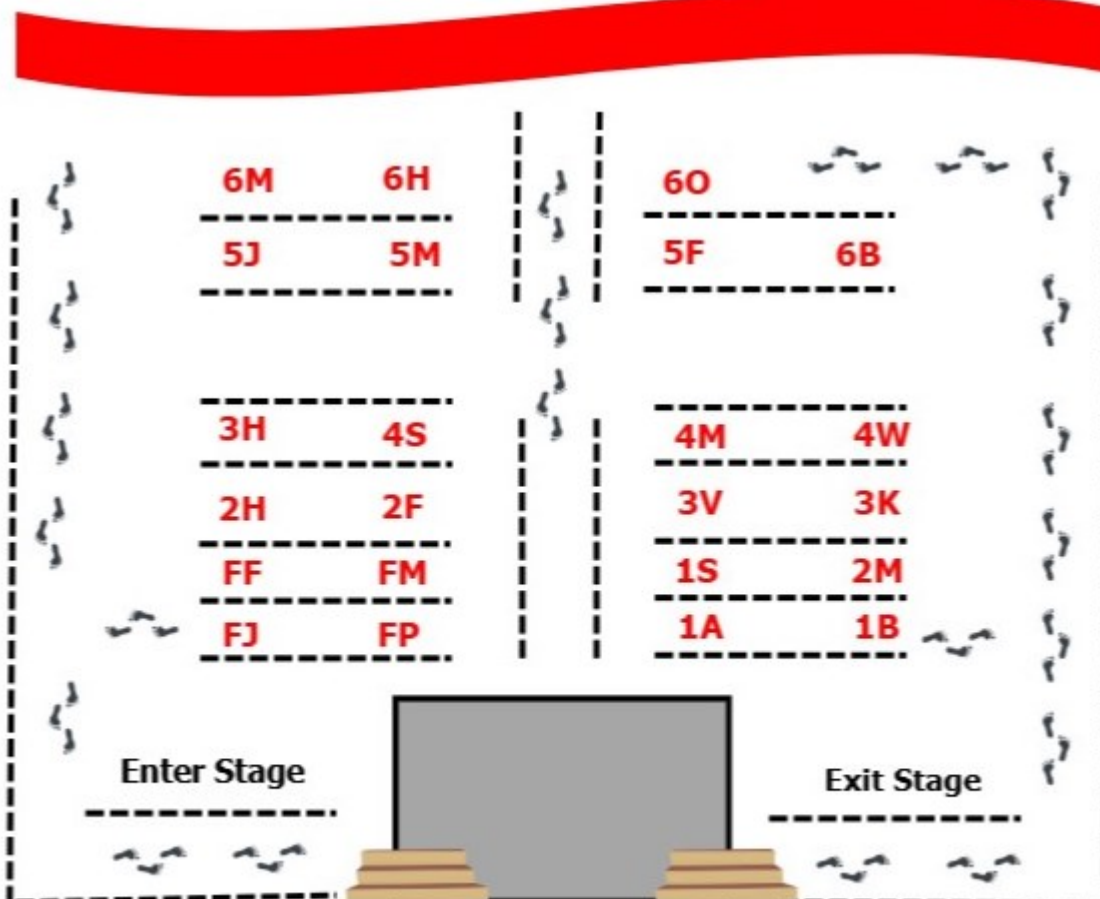
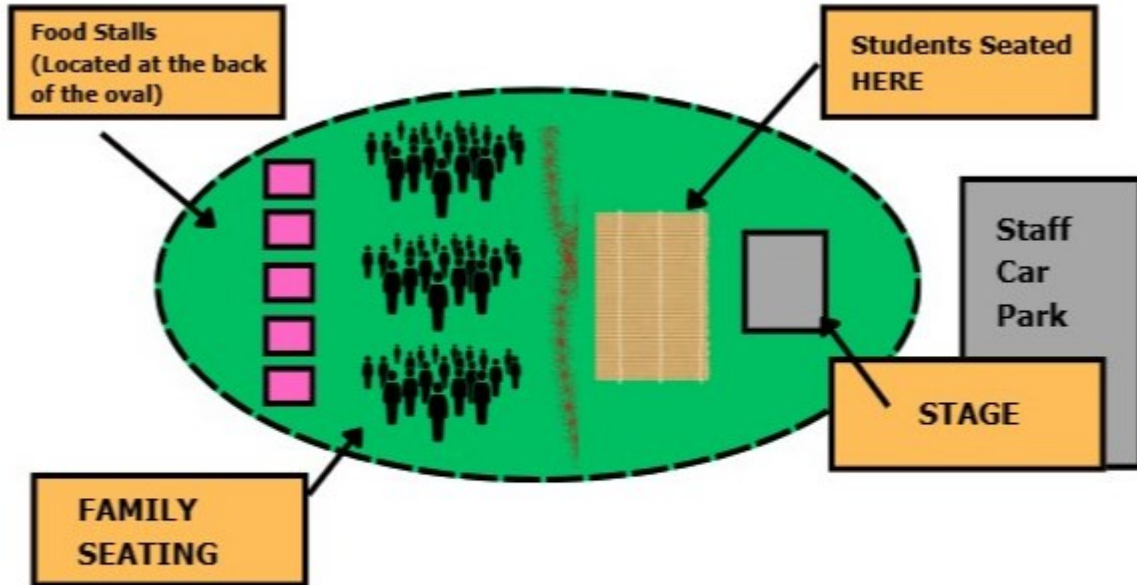
We cannot wait to share a magical night of music, community, and Christmas spirit with you all.

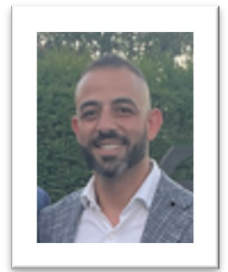
Thank you for your ongoing support—it is events like these that make Kilmore Primary School such a special place.



**SEATING MAP**

- Family seating positioned behind class grades.
- Class groups seated in the centre section in front of the stage
- Stage/performance front area clearly marked





## FAREWELL & THANK YOU SPEECH FOR DEB BARTON

I would like to honour someone truly exceptional—someone whose presence, kindness, and unwavering dedication have shaped the lives of countless students, staff, and families across an incredible **35-year career in education**.

It is my absolute privilege to speak about a much-loved member of our Kilmore Primary School community: **Deb Barton**.

Deb's journey in education spans decades of change, challenge, celebration, and growth. Yet through it all, she has remained a constant—steady, reliable, compassionate, and deeply committed to the wellbeing and success of every child she has supported.

Deb, your contribution to Kilmore Primary School has been nothing short of extraordinary.

You have worked tirelessly, quietly, and wholeheartedly behind the scenes—often doing the kind of work that doesn't always get the spotlight but absolutely holds the school together. Your ability to connect with students, especially those who need the most patience and understanding, is a gift. You have made children feel safe, seen, valued, and capable. And that is one of the greatest legacies any educator can leave behind.

Your warm smile, your gentle encouragement, your humour, and your deep empathy have shaped classrooms, supported teachers, and uplifted countless students who will carry your kindness into their futures.

In many ways, you have been the heart and hands of this school.

You've given your time, your energy, and most importantly—your heart.

And for that, we are all profoundly grateful.

As Deb prepares to step into the next chapter of her life, we acknowledge not just the years she has given, but the **impact** of those years. Thirty-five years of guiding, supporting, and nurturing young people is something to be immensely proud of. Deb, your legacy is woven into the fabric of this school. You have touched more lives than you will ever know.

While we are sad to say goodbye, we are also filled with gratitude for everything you have given us—and excitement for whatever comes next for you. Whether it is rest, adventure, family time, or new experiences, we hope the coming years bring you as much joy as you have brought to others.

On behalf of the entire Kilmore Primary School community—our staff, our students, our families, and everyone who has had the privilege of working alongside you—thank you, Deb.

Thank you for your service.

Thank you for your heart.

Thank you for your patience, your wisdom, and your endless generosity.

You will always be part of the Kilmore story, and you will be deeply, deeply missed.

Congratulations **Deb Barton**.

Deb, from all of us—

**Thank you, and congratulations on 35 remarkable years.**

**Michael Nicolaides**  
**Principal**  
**Kilmore Primary School**

# Kilmore Primary School

Be **KIND** Be **PROUD** Be **SAFE**

## Student Awards

At Kilmore Primary School, we are always working on modelling our school values of Kind, Proud and Safe. As a whole school, we explicitly teach and then give our students opportunities to display these values within and beyond the classroom doors.

The students listed below will be recognised for showing our school values at our assembly today.

We congratulate:

Foundation F — Isabella F Penny M, Harvey C Blair S, Blake C	Grade 3H — Madeline K Wyatt W Himmat H	Grade 6B — Rory W Zak K Kaleb B
Foundation J — Cody W	Grade 3K — Mason I, Gina D Theo K, Jhett O, Spencer S, Malakai K	Grade 6H — Ryan S
Foundation M — Archie E Cian K	Grade 3V — Lara F Oscar M	Grade 6M —
Foundation P — Hunter M Charles	Grade 4M — Emily W	Grade 6O — Evie T Nate M
Grade 1A — Adam S	Grade 4S — 4S	PE — Michelle H—FP
Grade 1B — Jordyn J	Grade 4W — Alexia P	ART —
Grade 1S — Beau R	Grade 5F — Harrison K	Performing Arts — Brax W — FP Isabella S — 5M
Grade 2F — Ava S	Grade 5J — Mason M	Science —
Grade 2H — Aurora C, Arianna M, Lucy T, Collins W, Zoe R, Mia M	Grade 5M — Brayden D, Kylah R	PMP — Lucas A — 1B MadayInn D — FP
Grade 2M — Peyton M, Alanah G, TJ W, Harlen G, Nat H, Jaxon T		

# Student Awards



# Year 6 Dash Program

All participants, along with our Term 4 winning team, will be celebrated at our online assembly next Fri 19<sup>th</sup> Dec at 1.00. Parents are welcome to join the link which will be sent out prior to the assembly.

Regards

Sandra Allison

Wellbeing Leading Teacher

**GNARLY**  
NEIGHBOURS 

**GNARLY**  
NEIGHBOURS 

**Gnarly Neighbours sessions with our  
Foundation students this week.**

**Students will participant for the final time next week.**



# Farewell Thank You from Miss Cat



Dear Kilmore Primary School Community,

I am writing to share that after much reflection; I have decided that it is time for me to farewell Kilmore Primary School and focus on a different chapter in my professional journey.

This was not an easy decision. KPS has been my home for many years, and it has shaped me more than I can put into words. I have had the privilege of teaching, learning from, laughing with, and growing alongside your children, and that has been one of the greatest joys of my career. Watching students step into the Performing Arts space with courage, creativity, humour, and heart is something I will carry with me always.

I am incredibly proud of what we have built together, and I have treasured the opportunity to help create a space where children feel safe to use their voices, be themselves, experience their emotions, and share their stories. There have been tears and triumphs, vulnerabilities and resilience, and so much laughter. Supporting our students and families and being shown such care and support in return has been so uplifting. I have come to know so many of you over the years, and I could never have imagined what this entire community would come to mean to me.

Thank you for your trust, your partnership, and your kindness over the years. Thank you for supporting your children to take creative risks, try new things, and shine in their own ways. Most of all, thank you for allowing me to be a part of their world- it has meant so very much and I will miss them more than I can say.

KPS will always hold a very special place in my heart, and I will carry my time here with deep gratitude and pride. It has been an honour to work alongside the dedicated staff, supportive families, and of course, the remarkable young people who make this community so special and I wish you all a future filled with creativity, joy, and success. I'll be cheering this wonderful community on from afar and hope our paths cross again someday.

I can't wait to see you all on Tuesday at my final KPS Christmas Concert, and to share one last amazing week together as part of this incredible community.

With much warmth and appreciation always,

**Miss Catherine Brennan (*Miss Cat*)**

# PLEASE RETURN ALL LIBRARY AND DECODABLE BOOKS NOW!

Thank you!

\*if you have any concerns regarding your child's library books, please email Liz: [elizabeth.simner@education.vic.gov.au](mailto:elizabeth.simner@education.vic.gov.au) and I will be happy to help.



# KPS Christmas Concert Update

The countdown is on! Our KPS Christmas Concert is only 4 days away!

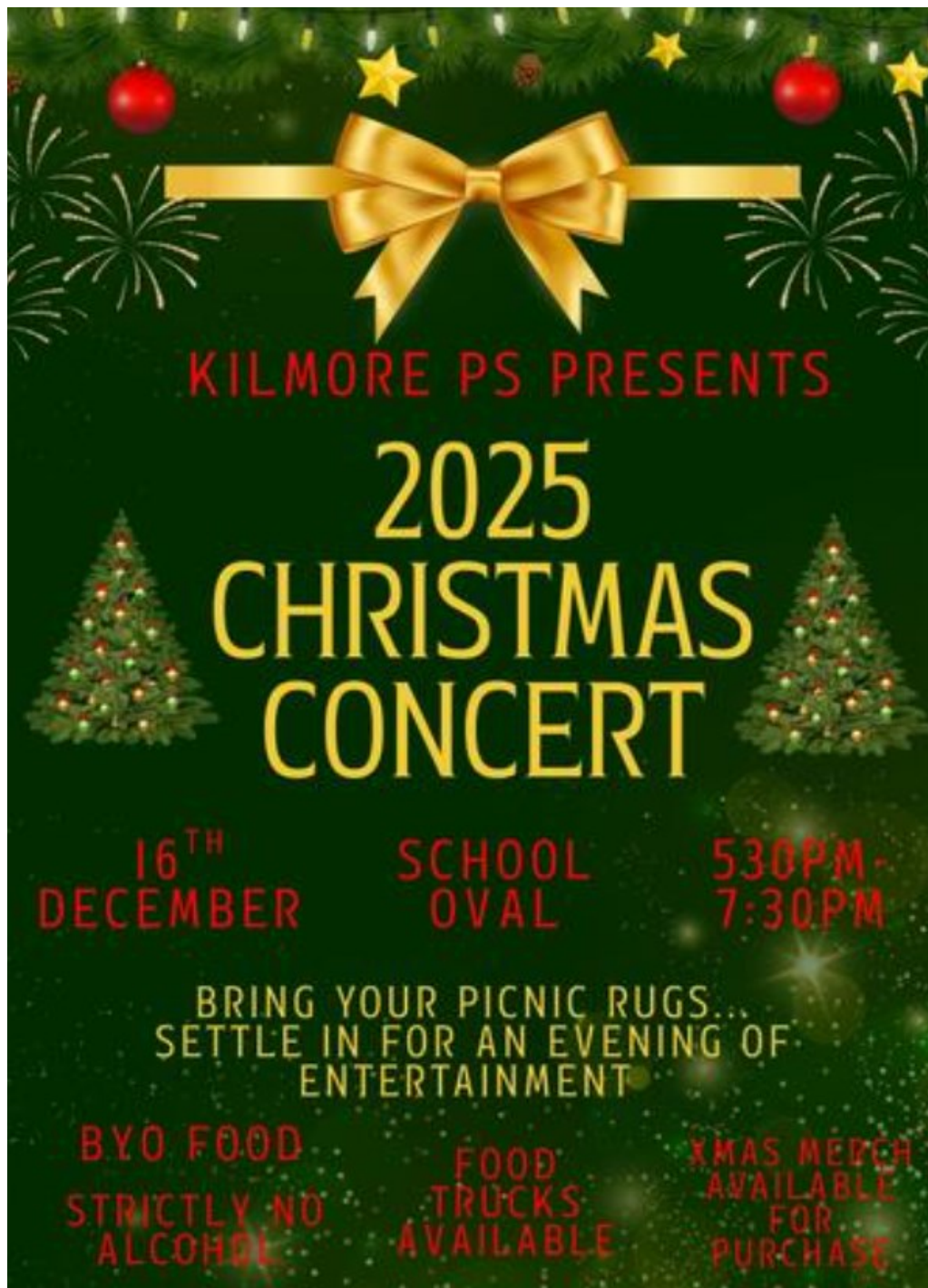
Follow the link below to our Christmas Concert website, where you will find:

- a copy of the flyer
- information on the Christmas raffle
- pages for each song, including the whole school song with an AUSLAN video, and individual class songs with lyrics

<https://sites.google.com/education.vic.gov.au/kpschristmasconcert2024/home>

Students have been asked to use the website at home to practise their singing, dancing and memorising the lyrics. They can't wait to show you what they have been working on!

Each class will be asked to wear a certain outfit that can be found at home, i.e. certain colours, with additional accessories organised by the school. Your child's Performing Arts teacher has discussed these outfits in class. You may receive a separate notification reminding families what colours their child/ren should wear.



# CHRISTMAS RAFFLE

**“Will YOU Be the Lucky Elf This Christmas?”**

🧑🏻‍🎄 Join the KPS Christmas Raffle! 🧑🏻‍🎄

**Valued at \$300.00**

💎 Tickets:

\$2 each

3 for \$5

10 for \$10

🌟 Winner announced at the Christmas Carols — must be there to claim it!

If not... 💎 we redraw!

PREP - YR 2  
PRIZES



YR 3-YR 6  
PRIZES



Our Grade 6 School Captains will be selling raffle tickets and visiting all classrooms.

Alternatively, you can purchase raffle tickets from the front office.

There will be two Christmas Bundles:

....one for Prep to Year 2 and one for Years 3 to Year 6



# SCHOOL BREAKFAST CLUBS PROGRAM BREAKFAST CLUB

Mon, Tues, Wed, Thurs



## Wellbeing



### Breakfast Club Term 4

#### Details:

**Days:** Monday, Tuesday, Wednesday, Thursday and Friday

- **Time:** 8:20am - 8:40am
- **Location:** Stadium (Kilmore-Lancefield will open at 8:20am).

Managed by KPS staff, Breakfast Club offers a selection of cereals and toast for students to enjoy. This program not only provides a nutritious start to the day but also encourages autonomy and enhances social skills. Breakfast Club is a student-only space designed to foster the development of these important skills.

**We kindly remind all families that students should not enter the school grounds before the Breakfast Club gate opens at 8:20am. We are not in a position to supervise or support students before this time, and your support is greatly appreciated.**

**Students attending Breakfast Club must enter via the Lancefield Road gate at 8:150am. Once inside, they are expected to remain in Breakfast Club until 8:30am, when yard supervision begins. This is to ensure the safety and wellbeing of all students.**

**If your child is not attending Breakfast Club, they must wait outside the gate until a school staff member welcomes them in at 8:30am.**

**During Breakfast Club, we are unable to provide one-on-one support. It is the responsibility of Parents and Carers to ensure their child enters and settles into Breakfast Club safely.**

**Thank you for your understanding and ongoing support in helping us maintain a safe and supportive environment for all students.**

If any parents or carers are interested in helping at Breakfast Club, please send an expression of interest to [Richie.Boyer@education.vic.gov.au](mailto:Richie.Boyer@education.vic.gov.au)

## LUNCHTIME CLUBS

Did you know that students can access a range of lunchtime club activities? These include gardening club, board games, chess, quiet games, clean-up club, sports equipment, friendship station, STEM club, and more. Students can select an area of interest, they can connect with friends, extend their social skills.....and just have fun!!



# Managing Your Mental Health Online

## Digital Mental Health Gateway

### Head to Health

#### Head to Health

A website that links Australians to free or low-cost online and phone mental health services. [headtohealth.gov.au](http://headtohealth.gov.au)

## Phone and Online Counselling



#### Lifeline 13 11 14

24/7 phone counselling, and online crisis support chat available each evening.



#### Suicide Call Back Service 1300 659 467

National 24/7 professional telephone & online counselling for anyone affected by suicide.



#### Beyond Blue Support Service 1300 22 4636

Telephone (24/7), online and email counselling, and moderated forums.



#### 1800RESPECT 1800 737 732

24/7 phone & online counselling for people seeking help for domestic violence situations.



#### MensLine Australia 1300 78 99 78

Advice, therapy and support for men with families and relationship concerns.



#### QLife 1800 184 527

Online chat or phone counselling for lesbian, gay, bisexual, transgender and intersex (LGBTI) people.



#### Butterfly Foundation 1800 33 4673

Telephone, online counselling, referral and online support groups for eating disorders.



#### Open Arms 1800 011 046

Phone and online counselling for veterans and their families.



#### SANE Australia 1800 18 7263

Phone counselling and moderated forums providing peer-to-peer support.



#### FriendLine 1800 424 287

A national support line "ready for a cuppa and a conversation" with trained volunteers.

## Young People



#### Kids Helpline 1800 55 1800

24/7 phone and online counselling for youth (5-25yrs).



#### Niggle

A free app for youth designed as a self-help toolkit for all things related to mental, social and emotional wellbeing.



#### eheadspace

Internet chat, email or phone support for young people (12-25yrs) with a range of issues.



#### ReachOut

Practical tools, support and moderated forums to help youth get through everything from everyday issues to tough times.



#### The BRAVE Program

Prevention, intervention, and treatment of anxiety in young people.



#### BITE BACK

Free online activities, psychoeducation and positive psychology aiming to promote wellbeing and resilience in young people.

## Programs



#### MindSpot

Free clinician supported online programs for stress, worry, anxiety and depression in adults aged 18+.



#### THIS WAY UP

A range of self-paced online CBT courses for stress, insomnia, anxiety and depression. Courses can be done as self-help or guided by your own clinician. Courses are either free or low cost.



#### Mental Health Online

Free online programs for a range of issues, with self-guided or therapist support options.



#### MyCompass

A free, online interactive self-help CBT service for people with mild to moderate depression, anxiety and stress. It's also appropriate for people who simply want to build good mental health.



#### MoodGYM

A free, interactive program based on Cognitive-Behavioural Therapy (CBT) and Interpersonal Therapy (IPT) to help prevent and manage symptoms of depression and anxiety.



#### e-Couch

A free, self-help program with modules for depression, generalised anxiety & worry, social anxiety, relationship breakdown, and loss & grief.



#### Healthy Mind

An Easy Read program to help people with intellectual disability to recognise and regulate thoughts and feelings.



#### ParentWorks

Online program for parents and caregivers providing evidence-based parenting strategies.



#### Centre for Clinical Interventions

Free downloadable self-help workbooks and modules for a range of mental health and wellbeing issues.

## Apps



#### MoodMission

A free app designed to help individuals overcome low moods and anxiety by discovering new coping strategies.



#### Daybreak

A website and app which supports individuals to cut back or take a break from using alcohol.



#### Smiling Mind

A free website and app teaching mindfulness meditation to young people and adults.



#### BeyondNow

A free app and online tool that helps users create a safety plan for when experiencing suicidal thoughts.

## Aboriginal and Torres Strait Islanders



#### WellMob

Social, emotional and cultural wellbeing online resources for Aboriginal and Torres Strait Islanders.



#### iBobbly

A social and emotional wellbeing self-help app for young Aboriginal and Torres Strait Islander Australians aged 15 years and older.

## Food Relief

Food relief helps our community members who need some support to access food. Below is a list of organisations to contact if you are needing food relief. Please contact your local provider to find out what types of food are available and if delivery is an option.

For community members who would like to support these organisations, they can do this by donating extra food.

## Mitchell Shire

Food Relief Organisation	Facebook or Website	Contact Details
Broadford Living and Learning Centre	<a href="#">Broadford Living and Learning Centre Facebook</a>	156-158 High St, Broadford Ph: 5784 4006
Freedom Care	<a href="#">Freedom Care Website</a>	127C Northern Hwy, Kilmore Ph: 0422 599 735
Love in Action Broadford and Wallan	<a href="#">Love in Action Broadford Facebook</a>  <a href="#">Love in Action Wallan Facebook</a>	0473 845 808 - Broadford 0436 457 154 - Wallan
Rotary Seymour	<a href="#">Rotary Seymour Facebook</a>	44 Emily St, Seymour
Salvocare / The Salvation Army Corporation Seymour	<a href="#">Salvocare Website</a>	8-10 Victoria St, Seymour
St Vincent De Paul Conference Kilmore and Seymour		0428 546 328 - Kilmore 5792 4167 - Seymour
Wallan Gateway	<a href="#">Wallan Gateway Website</a>	7 Commercial Drive, Wallan Ph: 5783 2777 - Gateway Ph: 0491 075 404 - Foodbank

Community Bank  
**Christmas  
carols**

**SATURDAY 13 DECEMBER  
HADFIELD PARK WALLAN  
FREE ENTRY | 5PM  
CAROLS FROM 6PM**

**VISIT FROM SANTA**

**LIVE ENTERTAINMENT  
FOOD TRUCKS  
KIDS ACTIVITIES**

PRESENTED BY

Community Bank  
WALLAN, KILMORE & BROADFORD

Discover  
MITCHELL

HILLTOP  
CATERING

SUPPORTED BY

Southern Cross  
GUILD

Nestlé



# Grade 6 Polo & Jacket Order Form 2025

**\*\* TWO ORDERING PERIODS \*\***

1st Round Orders due **31st October 2024** – will be delivered to KPS before the end of the 2024 school year

2nd Round Orders due **20th February 2025** – will be delivered to KPS before end of term 1

**ORDER FORMS MUST BE COMPLETED & HANDED INTO ALL THINGS UNIFORM**

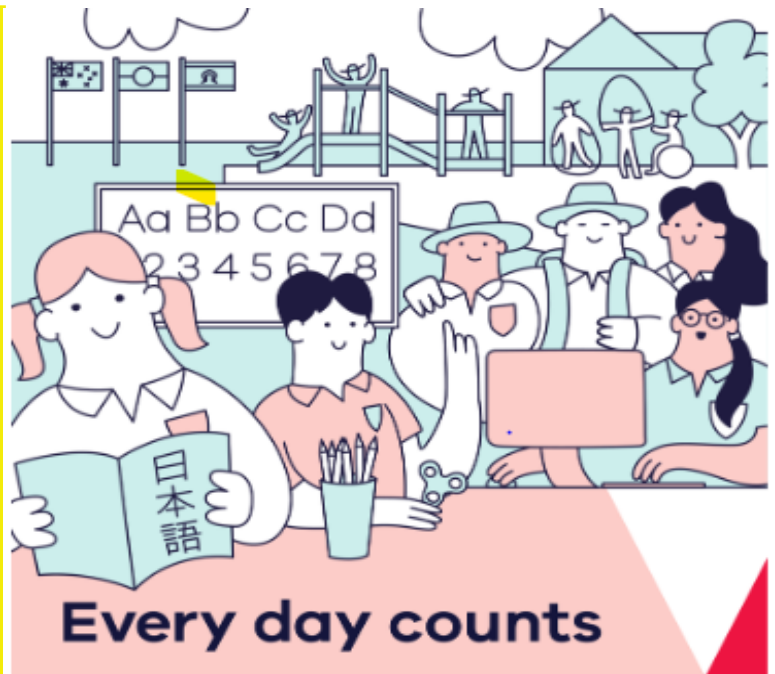
PLEASE NOTE : **STRICTLY NO LATE ORDERS CAN BE ACCEPTED**



**SURNAMES WILL  
BE PRINTED ABOVE SCHOOL  
DESIGN ON BOTH  
POLOS & JACKETS  
(ON THE BACK)  
SCHOOL LOGO EMBROIDERED  
ON THE FRONT  
- PRICING IS INCLUSIVE -**



**\*\*ORDER FORMS MUST BE COMPLETED IN FULL & HANDED INTO ALL THINGS UNIFORM \*\***



## Every day counts

Missing **one day per fortnight** adds up to missing **four weeks** of school a year.



[vic.gov.au/education](http://vic.gov.au/education)



## Safety around schools

Everyone has a responsibility

### Make school time safe for everyone

Please take extra precautions when dropping children off and picking them up from school. Children are still learning the road rules and can be unpredictable and difficult to see.

Important things to remember:

- Travel at a maximum of 40 km/h
- Never use a mobile phone while driving
- Always follow the crossing supervisor's instructions
- Allow extra time so you don't need to rush
- Consider parking a few streets away and enjoy a walk

Together, let's reduce speeds and improve safety for all children.

Contact us  
t. (03) 5734 6200 e. [mitchell@mitchellshire.vic.gov.au](mailto:mitchell@mitchellshire.vic.gov.au)  
[www.mitchellshire.vic.gov.au](http://www.mitchellshire.vic.gov.au)



# HEALTHY START BREAD PROGRAM

## FREE BREAD FOR HEALTHY KIDS!

### HOW IT WORKS:

Every few weeks, one lucky class is chosen to receive a free loaf of fresh bread for each student.



Each child also takes home a voucher for **two FREE loaves per week for 4 Weeks** to redeem at Bakers Delight Wallan.



EXCLUSIVELY AT

*Bakers Delight*  
WALLAN





## Holiday Reading!

School borrowing might be closed but there are plenty of alternatives to getting your hands on some great books! Your local library is free to join and you can borrow from a huge selection of books available across the whole of the state! Even if you go on holiday, you can join up to the local library there for some great holiday reading...but don't forget to return them before you head home! Another option is to go looking for a street library where people donate books for others to enjoy. If you have any books you no longer need, you could even add your own donation. And as a treat, be sure to visit your local bookshop where you are sure to find something special to buy and keep!

LOVE  
YOUR  
BOOK  
SHOP



## SUMMER Holidays



BOOKINGS OPEN NOW! >>



**7:00 AM START**  
**6:00 PM END**

PLEASE ARRIVE BY 9AM ON EXCURSION DAYS

**IN-HOUSE** **INCURSION** **EXCURSION**

<b>MON · 22nd DEC</b>	<b>A White Christmas</b>	
	We're dreaming of a white Christmas... Today TeamKids is super excited for Christmas craft! We're going to make awesome clay gingerbread, elf hats and Christmas Musicals! Get ready for a jingly good time!	<b>Daily Fee</b> \$97
		<b>After Max CCS*</b> \$9.70

<b>TUE · 23rd DEC</b>	<b>Aussie Christmas</b>	
	Santa's swapping snow for sand this year! Join us for a fair dinkum festive celebration filled with backyard cricket, beachy vibes, and Christmas cheer – Aussie-style! Slip, slop, slap and get ready for the jolliest day Down Under.	<b>Daily Fee</b> \$97
		<b>After Max CCS*</b> \$9.70

**Team Kids**

**= SCREEN FREE FUN**

**FUN CLUBS**

**EPIC EVENTS**

**HOLIDAY FUN**

**YUMMY SNACKS**

**AWESOME PARTIES**

**FUN ZONES & GAMES**

**MAKE NEW FRIENDS**

**AND MORE...**

\*Child Care Subsidies may apply. \$5 Admin Fee per family. \$10 Late Fees apply within 7 days per child. Payment plans available.  
 \*\*Experience/Activity Fee. Programs may be subject to change. Third Party Payment Fees apply. See Terms and Conditions for cancellation policy



**FIND A VENUE**  
TEAMKIDS.COM.AU/VENUES



**CHOOSE YOUR ADVENTURE**  
BOOK TODAY!





**7:00 AM START**  
**6:00 PM END**

**PLEASE ARRIVE BY 9AM ON EXCURSION DAYS**

**IN-HOUSE** **INCURSION** **EXCURSION**

MON · 5th JAN	TUE · 6th JAN	WED · 7th JAN	THU · 8th JAN	FRI · 9th JAN
<b>Wander-ful Wizards</b>	<b>Water Warriors</b>	<b>Pickle Ball Party</b>	<b>The Spongebob Movie</b>	<b>Robotic Innovators</b>
Ready to make some magic? It's a day of wand-waving, potion-brewing, and spell-casting fun! Enter a world where imagination rules, mischief sparkles, and every child becomes a wizard of wonder.	Join the Water Warriors for a splashing good time! Kids will gear up for epic water games, challenges, and a tidal wave of fun. Ready to make a splash? Let's dive in! *towel and change of clothes reqd.	Grab your paddle and hit the court for some pickleball fun! Fast-paced, full of laughs, and perfect for all ages, this game is all about rallying, smashing, and having a blast!	Today you're off to the movies to join SpongeBob's journey to the ocean's depths to face the Flying Dutchman's ghost, encountering challenges and uncovering marine mysteries. *Rated PG/Allergy Alert	Calling all innovators! Today, we're tackling real-world problems and crafting ingenious solutions using LEGO. Join us for an inspiring and creativity-fuelled session to help save our oceans!
<b>Daily Fee</b> \$97	<b>Daily Fee</b> \$114	<b>Daily Fee</b> \$130	<b>Daily Fee</b> \$135	<b>Daily Fee</b> \$120
<b>After Max CCS*</b> \$9.70	<b>After Max CCS*</b> \$11.40	<b>After Max CCS*</b> \$13.00	<b>After Max CCS*</b> \$13.50	<b>After Max CCS*</b> \$12.00

MON · 12th JAN	TUE · 13th JAN	WED · 14th JAN	THU · 15th JAN	FRI · 16th JAN
<b>Rocket Science</b>	<b>Slippery Slime Lab</b>	<b>VR Escape</b>	<b>BOUNCE Inc.</b>	<b>Jellyfish Jamboree</b>
3, 2, 1... Blast off! Today we'll be reaching for the stars as we create and build our own rockets! We'll have an out of this world time using a range of materials before heading outside to see how high they can go!	Get ready to mix, squish, and stretch at the Ultimate Slime Lab! Make fluffy, glittery, or crunchy slime, take on the Stretch-Off Challenge, and dive into gooey Oobleck fun. It's messy, marvellous, and totally slimetastic!	Get ready to ignite your imagination and step into a world of endless possibilities when Dream City visits TeamKids! Experience interactive 3D adventures and discover new cultures as you travel the globe with virtual reality.	The sky's the limit at BOUNCE! We'll be bouncing off the walls as we explore this adrenaline-inducing playground full of trampolines, awesome adventure features & soft padding. *Height restrictions apply & socks reqd..	Hold onto your flippers and dive into this underwater adventure for all hands on deck in creative chaos, sea-riously silly challenges, and waves of laughter!
<b>Daily Fee</b> \$114	<b>Daily Fee</b> \$117	<b>Daily Fee</b> \$122	<b>Daily Fee</b> \$141	<b>Daily Fee</b> \$122
<b>After Max CCS*</b> \$11.40	<b>After Max CCS*</b> \$11.70	<b>After Max CCS*</b> \$12.20	<b>After Max CCS*</b> \$14.18	<b>After Max CCS*</b> \$12.20

\*Child Care Subsidies may apply. \$5 Admin Fee per family. \$10 Late Fees apply within 7 days per child. Payment plans available.

\*\*Experience/Activity Fee. Programs may be subject to change. Third Party Payment Fees apply. See Terms and Conditions for cancellation policy



**FIND A VENUE**  
TEAMKIDS.COM.AU/VENUES

**CHOOSE YOUR ADVENTURE**  
BOOK TODAY!





**7:00 AM START**  
**6:00 PM END**

PLEASE ARRIVE BY 9AM ON EXCURSION DAYS

**IN-HOUSE** **INCURSION** **EXCURSION**

MON · 19th JAN	TUE · 20th JAN	WED · 21st JAN	THU · 22nd JAN	FRI · 23rd JAN
<b>Shell Yeah!</b>	<b>Hush Party</b>	<b>Grand Prix of Europe</b>	<b>Wilderness Wander</b>	<b>Animal Antics</b>
Crabs that dance, turtles that chill, and jellyfish that jiggle – our underwater world is full of character! This day's got more fins, flippers, and fun than a coral reef party! Shell yeah, it's going to be totally jaw-some!	We're in for a treat as we listen to the beat at the silent disco Hush Party! We'll pop on wireless headphones and dive into a world of music, movement, and fun! Get ready to party glowing headphones, dance battles, and interactive games!	Today you're off to the movies to help Edda, a young mouse with BIG dreams, seize her chance to race in the Grand Prix disguised as her hero, Ed. She must outwit her rival's sneaky sabotage and show that even the smallest racer can make a huge impact. *Rated PG/Allergy Alert	Today we will be exploring Nangak Tamboree Sanctuary. We will start with a Wilderness Walk followed by catching waterbugs and discussing who eats who in the natural environment!	Build it like Brickham! Are you ready to get your Master Build on during this EPIC animal-inspired brick fest? Build 2D mosaic models of your favourite mammal, reptile, or marsupial – the animal choice is yours!
<b>Daily Fee</b> \$97	<b>Daily Fee</b> \$114	<b>Daily Fee</b> \$135	<b>Daily Fee</b> \$139	<b>Daily Fee</b> \$115
<b>After Max CCS*</b> \$9.70	<b>After Max CCS*</b> \$11.40	<b>After Max CCS*</b> \$13.50	<b>After Max CCS*</b> \$13.90	<b>After Max CCS*</b> \$11.50

**TUE · 27th JAN**

## Shipwreck Shenanigans



Ahoy, matey! A mysterious shipwreck's been spotted – and it's packed with adventure. Join the crew for treasure hunts, sea shanties, and plenty of pirate mischief. X marks the fun

**Daily Fee** \$97

**After Max CCS\*** \$9.70

\*Child Care Subsidies may apply. \$5 Admin Fee per family. \$10 Late Fees apply within 7 days per child. Payment plans available.

\*\*Experience/Activity Fee. Programs may be subject to change. Third Party Payment Fees apply. See Terms and Conditions for cancellation policy

**FIND A VENUE**  
TEAMKIDS.COM.AU/VENUES

**CHOOSE YOUR ADVENTURE**  
BOOK TODAY!

